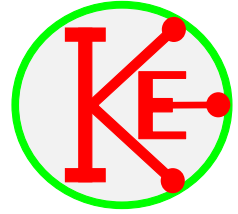


# Test Amplifier 1.

©IPK09/02/17



## Specification

Designed to provide audio output from a variety of sources.

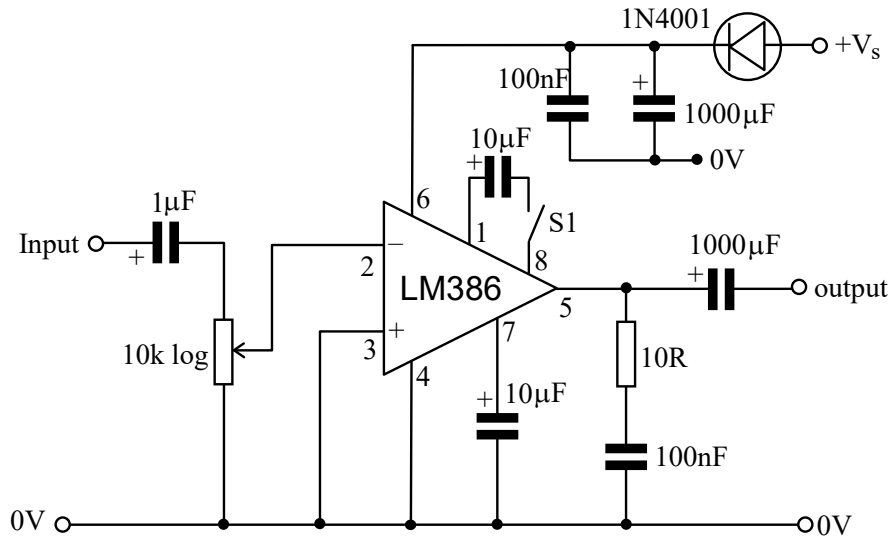
Operates from 6V to 12V with reverse polarity protection.

Voltage gain can be set to 20 or 200.

Power output from 12V supply is 250mW.

Bandwidth is 20Hz to more than 20kHz.

Input impedance is 10k $\Omega$ .



Switch S1 sets the gain:- open = 20 closed = 200. This is shown as a green solder blob below.

## Circuit board layout, TOP view.

