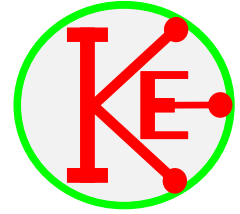


# LOGIC PEN.

ICPK21/07/14



## Specification

Takes power from the circuit under test.

Operates from 5V to 9V.

Detects High, Low and unconnected states.

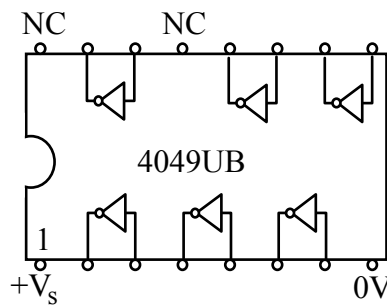
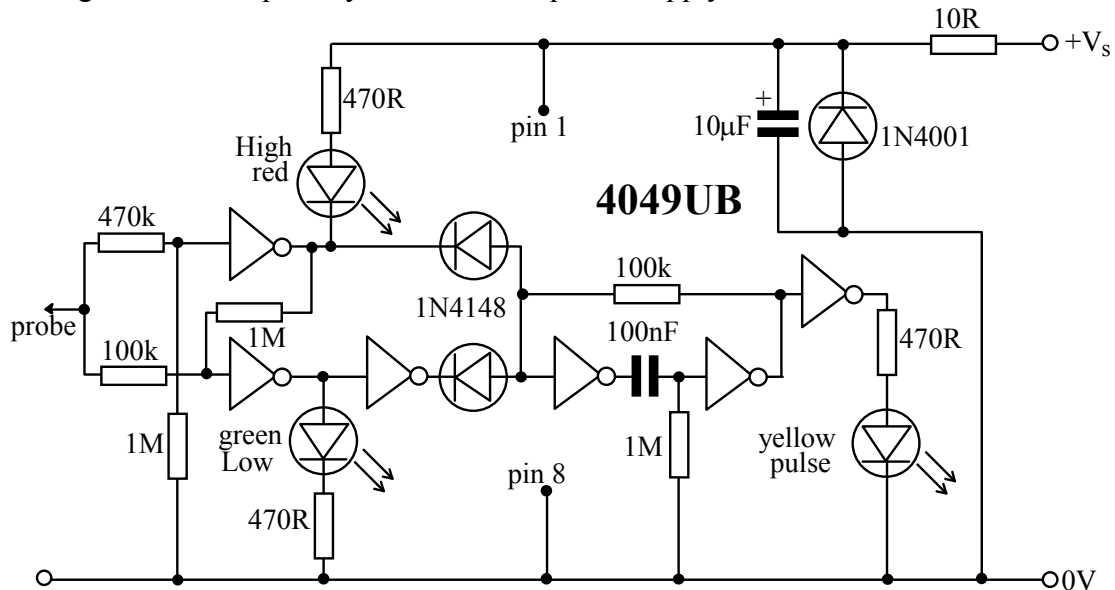
When the probe is unconnected or connected to a high impedance output, no LEDs are alight.

Short pulse detector responds to Low to High and High to Low transitions.

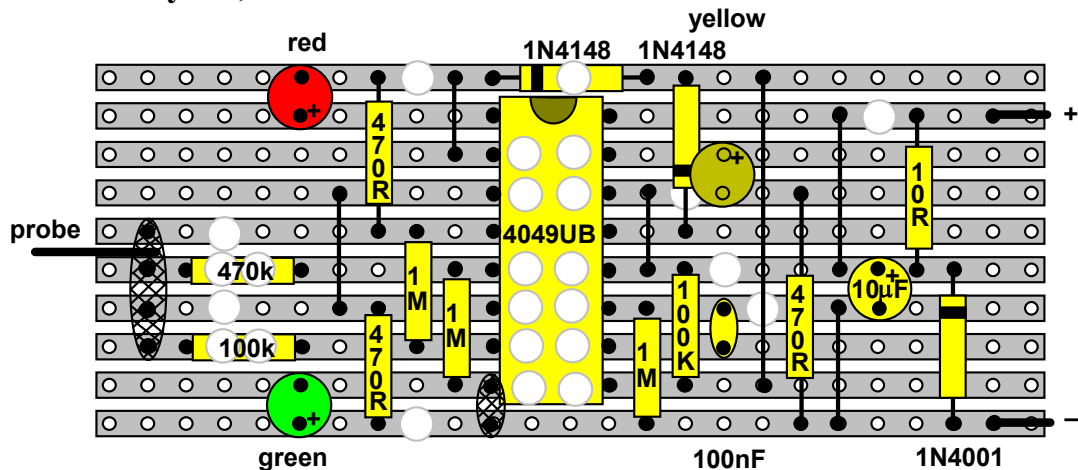
Short pulse detector responds to 100ns pulses.

Short pulse detector stretches pulses to 0.1s.

Protection against reverse polarity connection to power supply.



## Circuit board layout, TOP view.



10 strips by 25 holes