

## Triac Mains Relay Board



**APPLY ALL CAUTION WHEN BUILDING AND USING -  
MAINS VOLTAGE CAN BE LETHAL**

### Specification

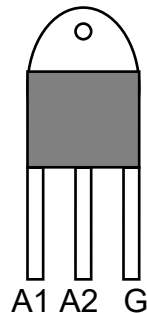
Output	Triac 600V and 40A
Input	3 - 5mA at 1.5V
Isolation	>2500V

**Triac** - BTA41-600B - 600V and 40A

IGT 50 - 100mA at 1.3V

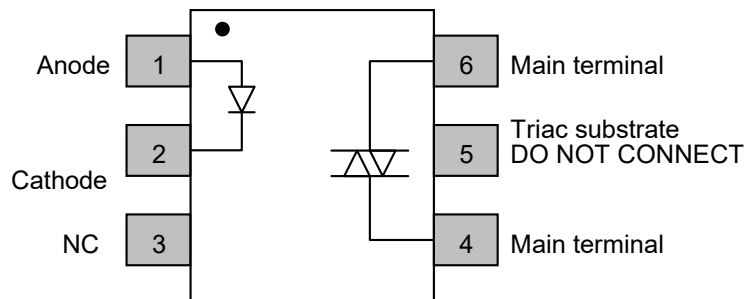
This triac has an isolated tab and so can be directly mounted to a heat sink.

Power dissipation at 13A is around 12W - reasonable size heat sink required.

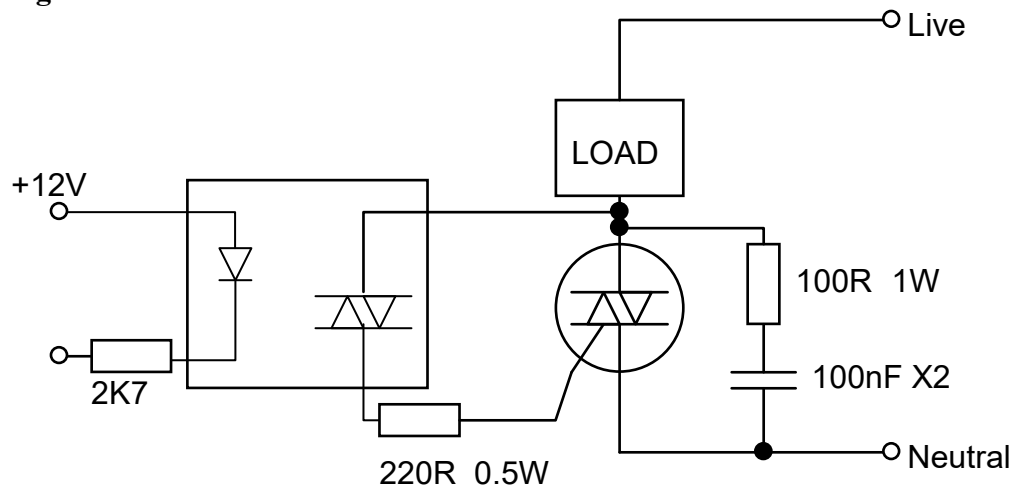


**Opto-Triac** - MOC3023X - 400V and 100mA

LED 3 - 5mA at 1.5V

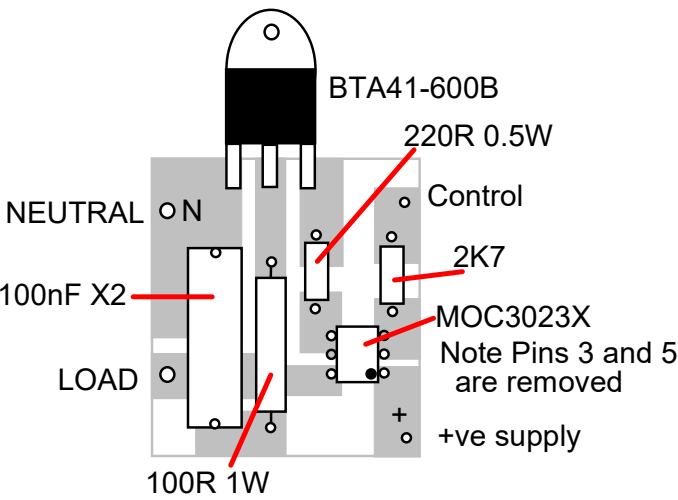


### Circuit diagram



Circuit Board

4cm x 3.6cm



COPPER VIEW

