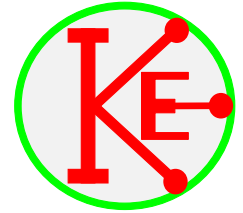


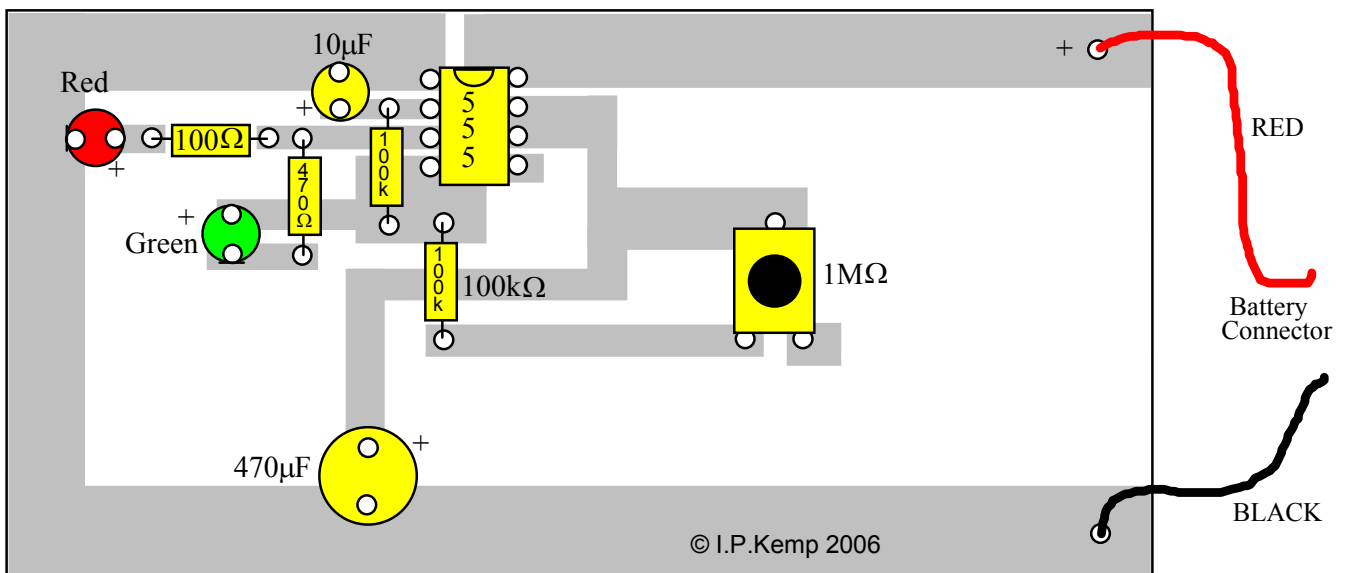
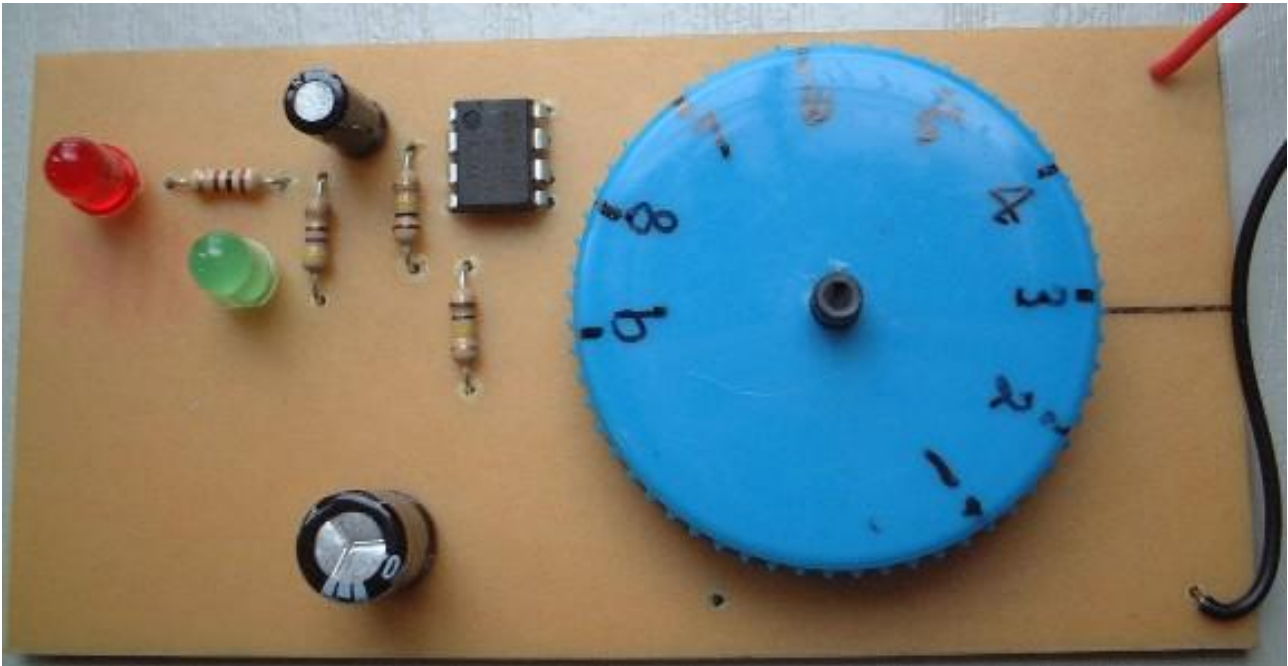
Egg Timer

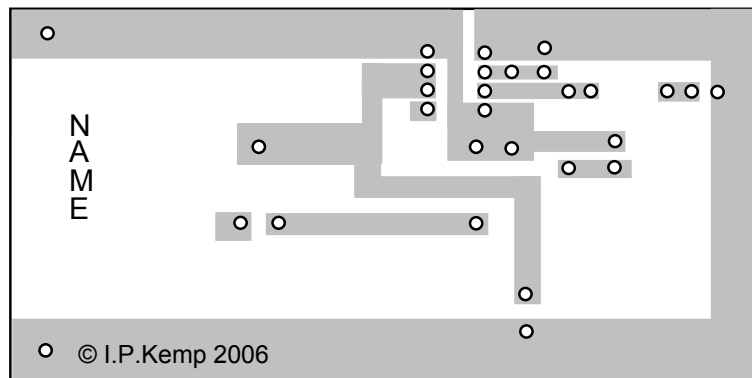
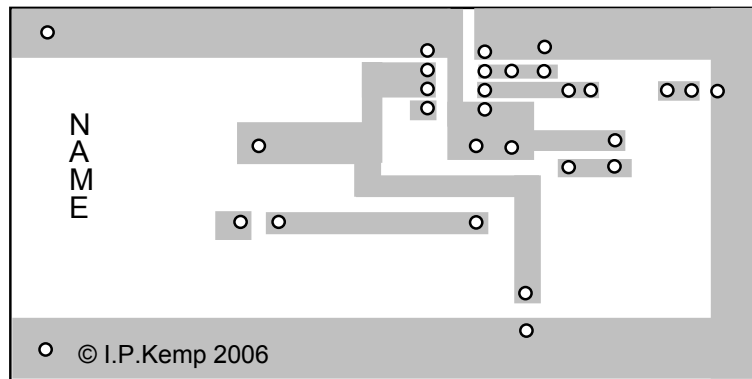
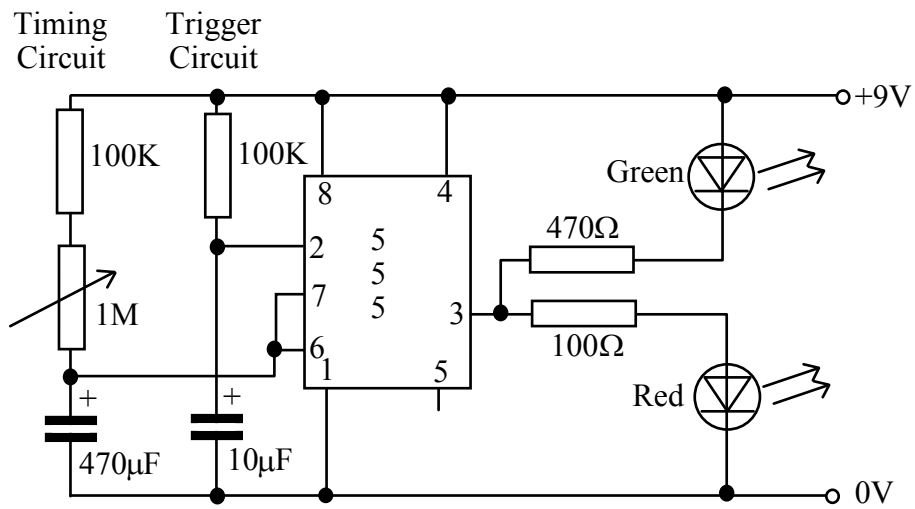
©IPK100107



Specification

- Operates from a PP3 battery.
- Timing starts on switch-on.
- Timing period adjustable from approximately 45 seconds to 9½ minutes
- A red flashing LED indicates that it is timing.
- A green LED indicates that the timing is complete. (This could be replaced with a buzzer.)
- Current consumption is approximately 10mA





Modifications

To change the circuit to use a buzzer to indicate the end of the timing period, the green LED and 470Ω resistor should be removed and a 6-12V buzzer/AWD should be connected in their place, with the positive side being joined to the positive supply line.