

Nets

(Geometrical regular solids)

Equipment

Nets printed onto thick paper

Glue.

1 pair of scissors.

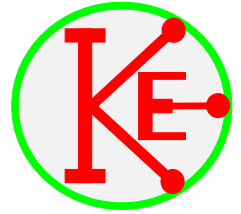
Risks.

Cuts from scissors. Stab injuries from scissors. Paper cuts.

SESSION

- 1). Discussion of Engineering.
Why is Engineering important in STEM?
- 2). Discussion of Faces, Edges and Vertices.
- 3). Discussion of Nets.
- 4). Net for a tetrahedron.
Use of tabs.
Accurate cutting.
Using a ruler to fold the paper.
Check how it fits together BEFORE applying glue.
- 5). Make up Square based pyramid
Cube, Prism, Cone and octahedron
- 6). Complete table for Faces, Edges and Vertices.

NETS

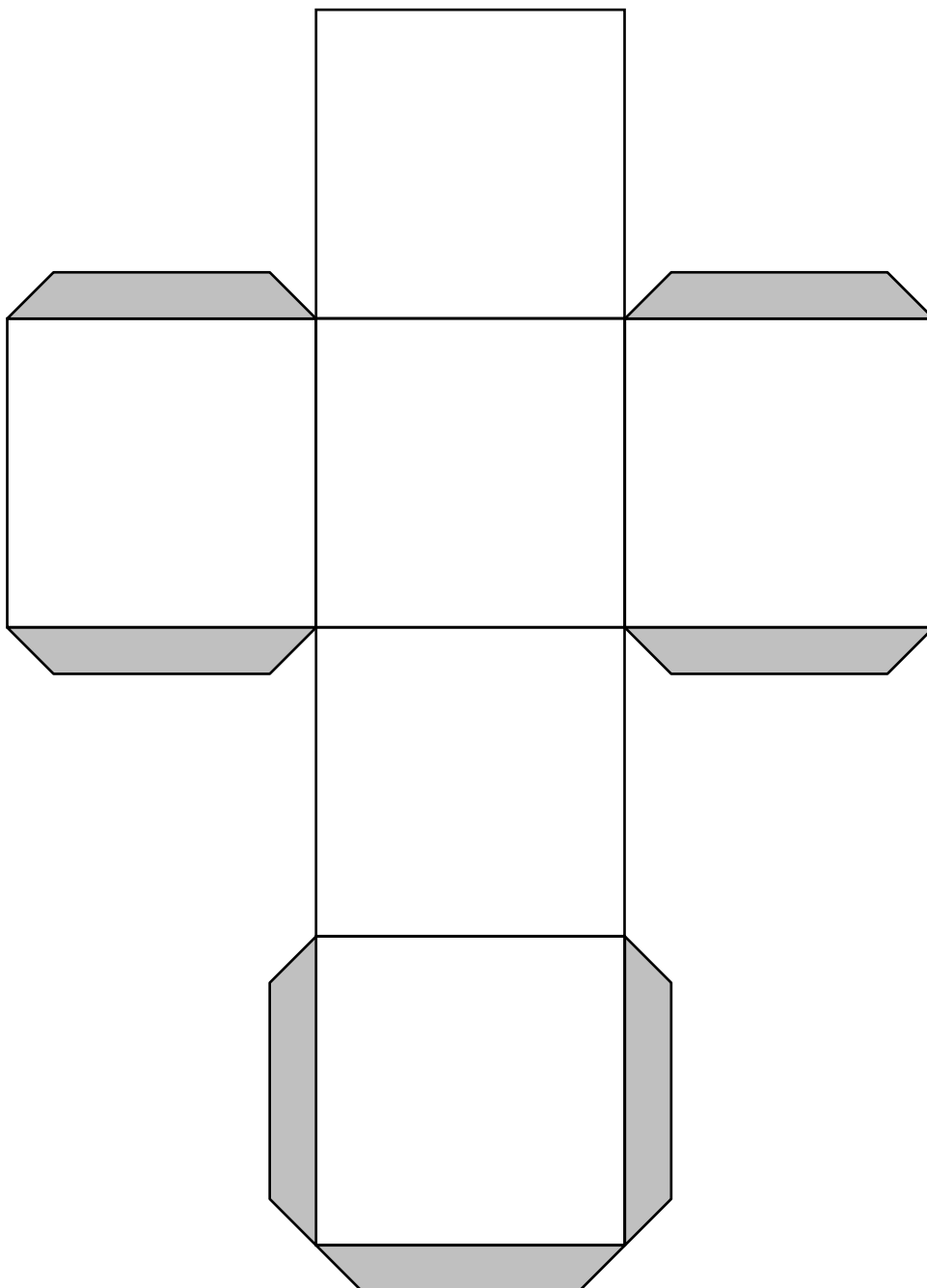


"A net is a pattern that can be cut and folded to make a solid shape."

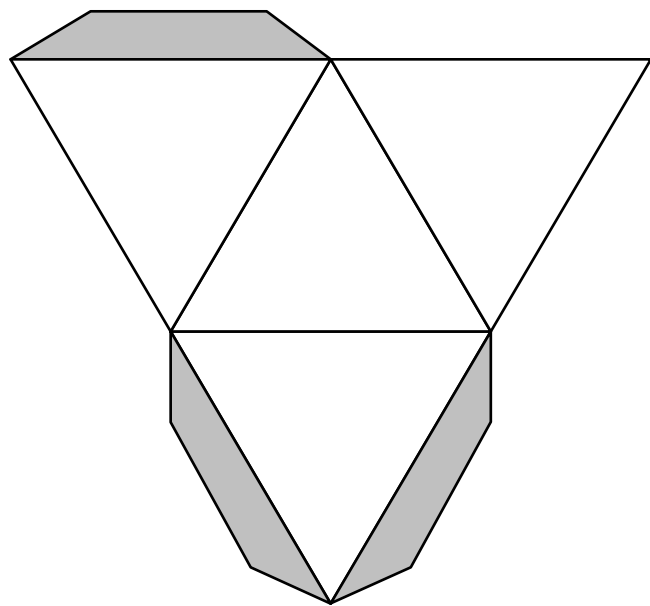
To enable nets to be assembled into models of solid shapes we need 'tabs'.
The tab (shaded grey) is used to glue the net together to form the solid shape.

Carefully cut out the net including the tabs.
Beware of cuts to your hands from the scissors and paper cuts

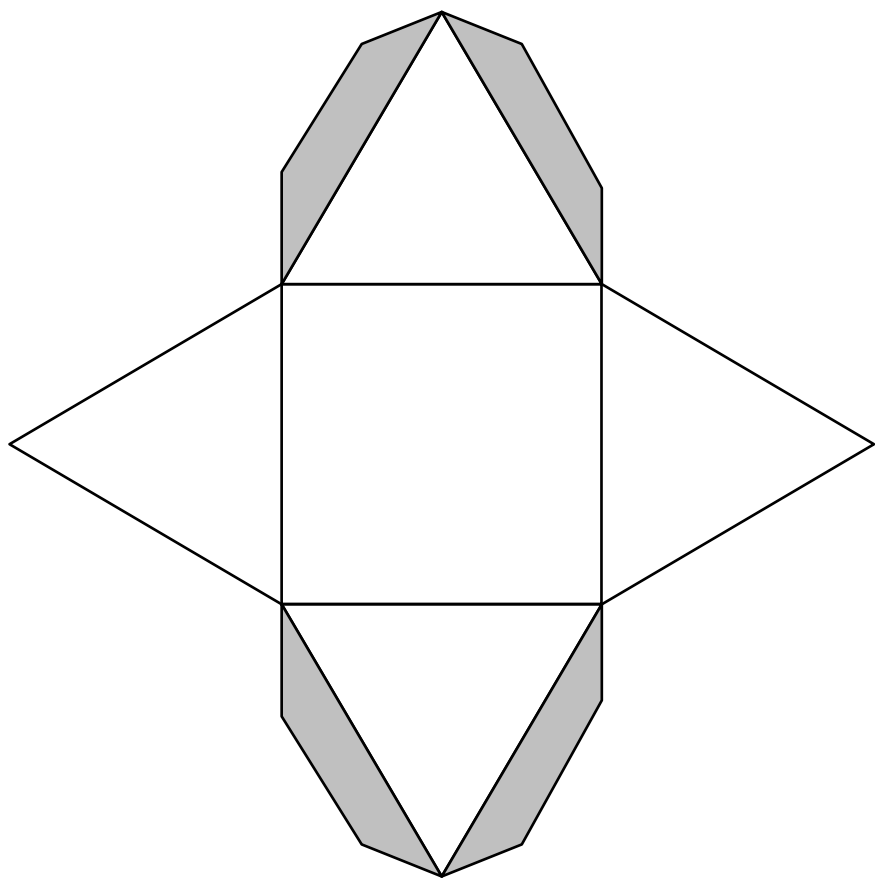
Cube



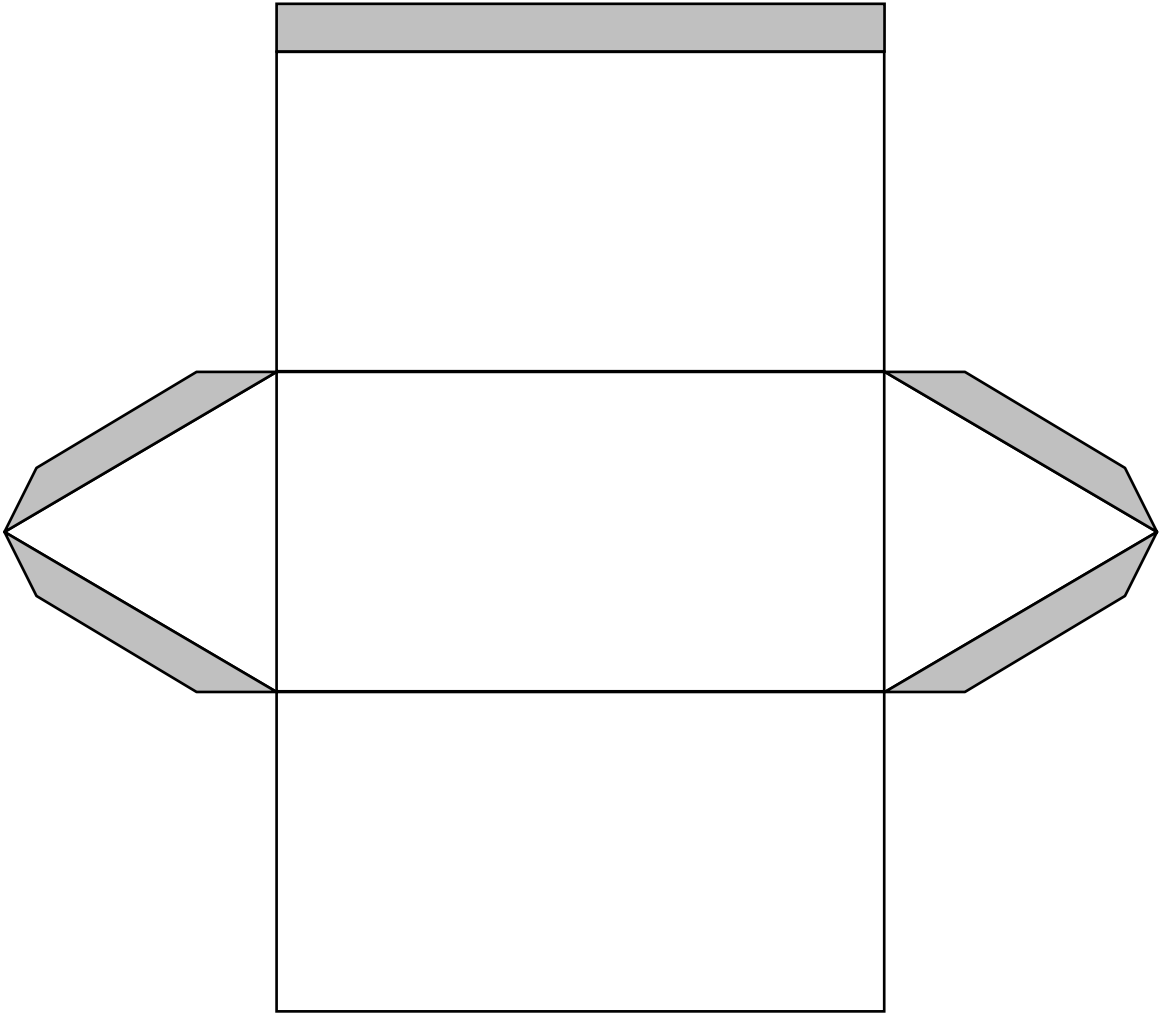
Tetrahedron



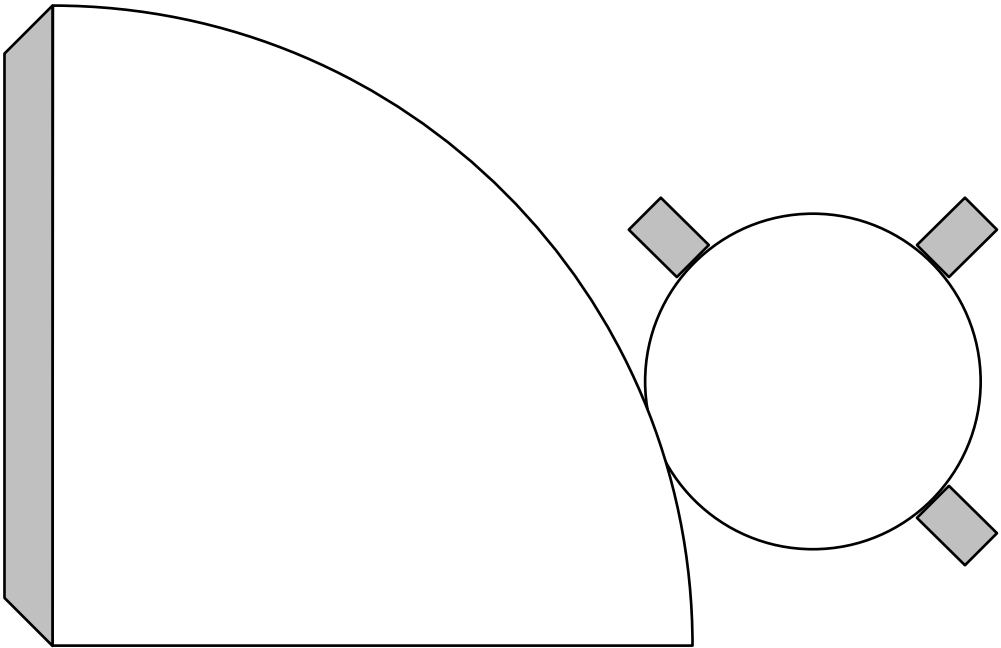
Square based pyramid



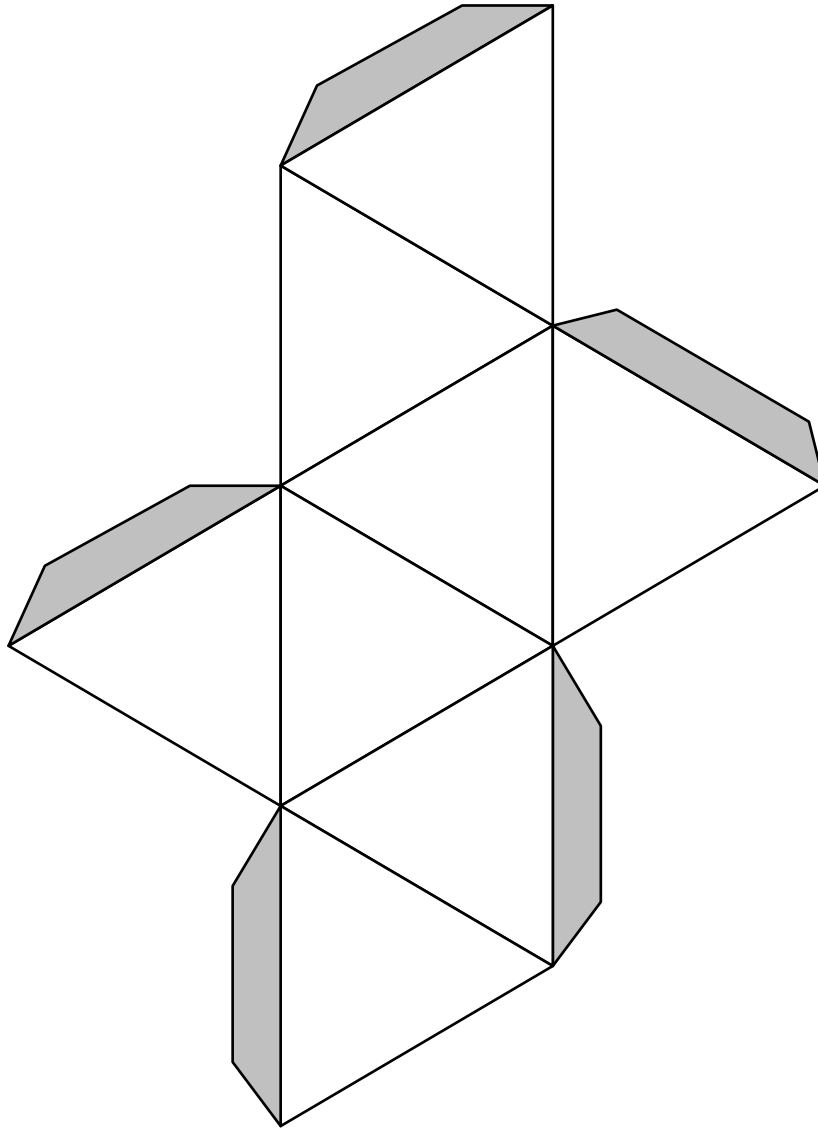
Triangular Prism



Cone



Octohedron



SHAPE	Faces	Edges	Vertices
Cube			
Tetrahedron			
Square based pyramid			
Triangular prism			
Octahedron			
Cone			