

23 Flower cross-section

Equipment

- 1 x (green) drinking straw.
- Flower cross section template.
- Colouring pencils etc
- Glue
- Scissors
- Different flower heads
- Magnifying glasses

RISKS

Students must wash their hands after handling the flowers.

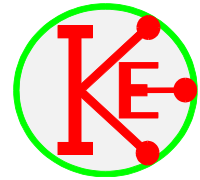
Cuts from scissors

Paper cuts

SESSION

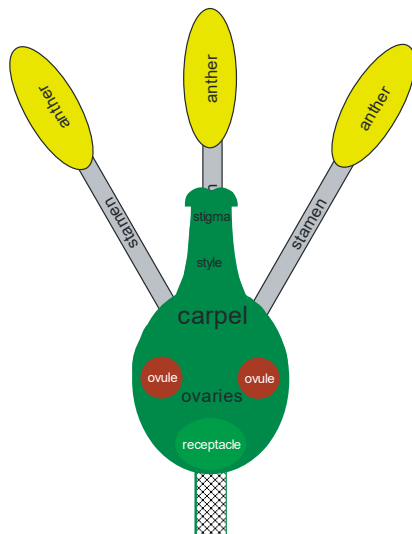
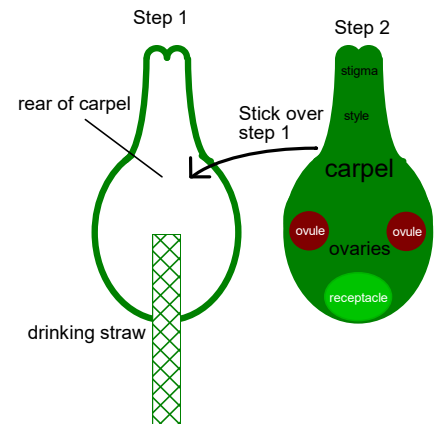
- 1). Show some pictures of / live flower heads.
Students try to identify similarities between the different flowers.
Do insects see the flowers the same as us - visible and UV pictures.
Discuss the purpose of flowers.
Discuss what is formed when a flower fades.
Discuss whether there are any common features.
- 2). Discuss making across-section of a model flower to show the different parts.
Discuss the purpose of the different parts.
Students make model.
- 3). Students dissect live flowers to find the various parts of their model.
Students examine the different parts with a magnifying glass.
- 4). Students can stick the various parts of the flowers onto plain paper and label.

Flower cross-section

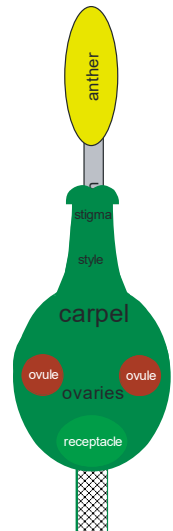
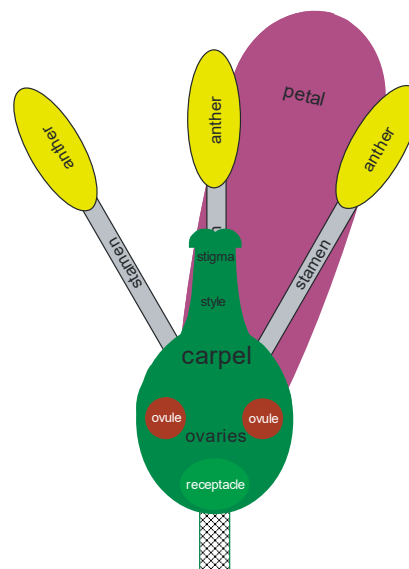


Construction

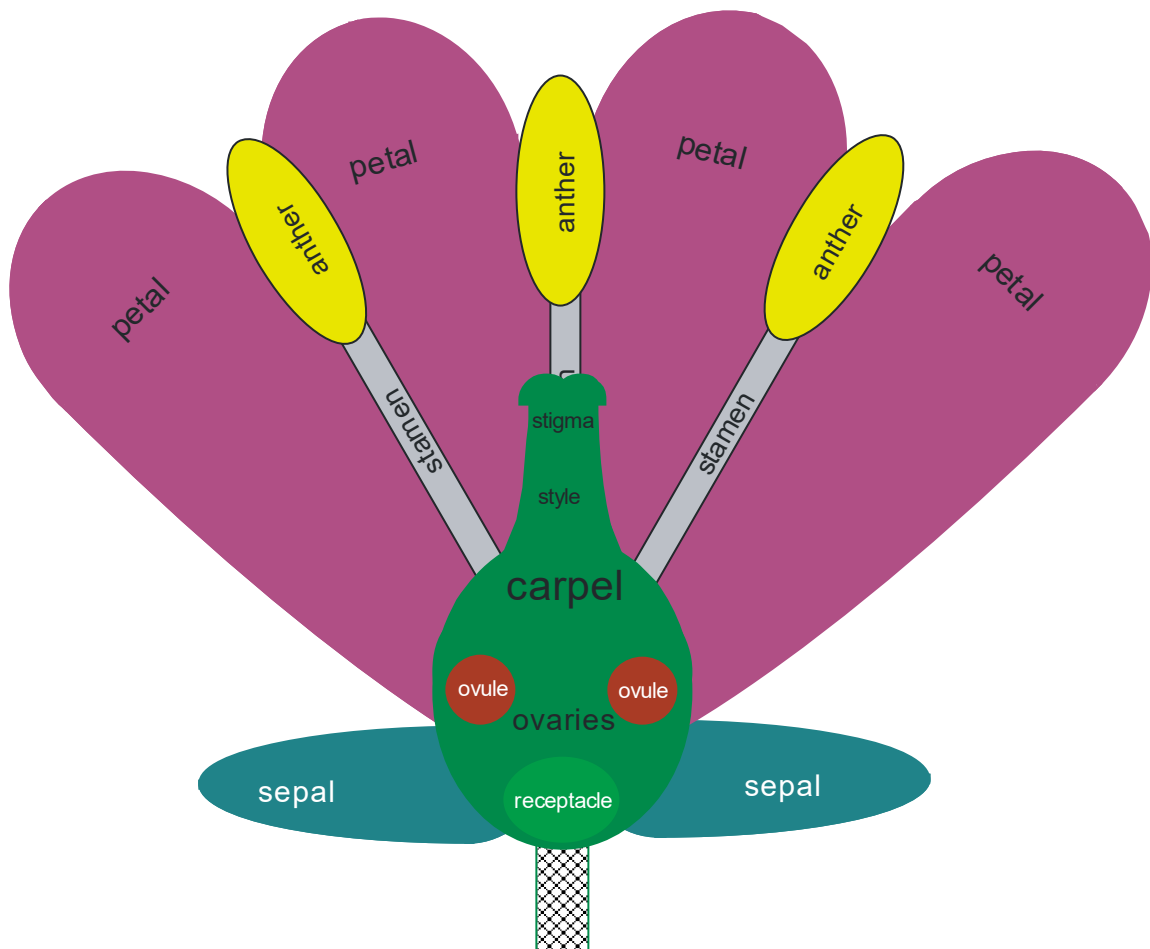
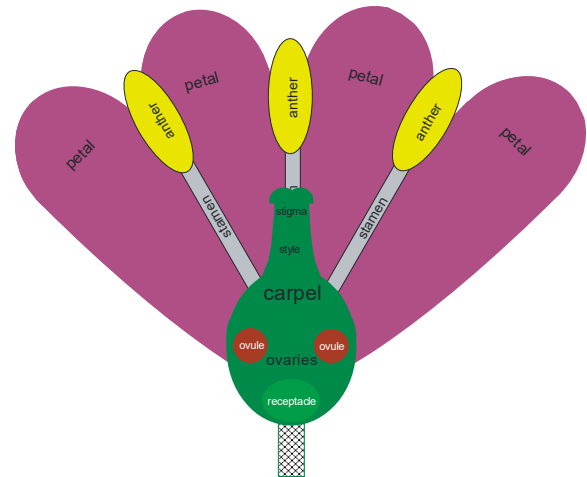
- 1). Cut out the two shapes labelled 'carpel' and shade in with a green colour.
- 2). Flatten one end of a green drinking straw.
Put glue onto the rear of one of the carpel shapes and stick onto the flattened drinking straw.
Put glue onto the rear of the other carpel shape and stick onto the other side of the flattened drinking straw, carefully lining this up with the other carpel shape.
- 3). Colour the anthers yellow or orange.
Cut out the 3 combined anthers and stamens.
- 4). Put glue at the bottom of stamen and stick onto the rear of the carpel.
Glue the bottom of the other two stamen and attach to the rear of the carpel, either side of the first stamen/anther.



- 5). Colour the petals and cut them out.
Put glue at the bottom of a petal and stick to the rear of the carpel so that the petal is between two of the anthers.

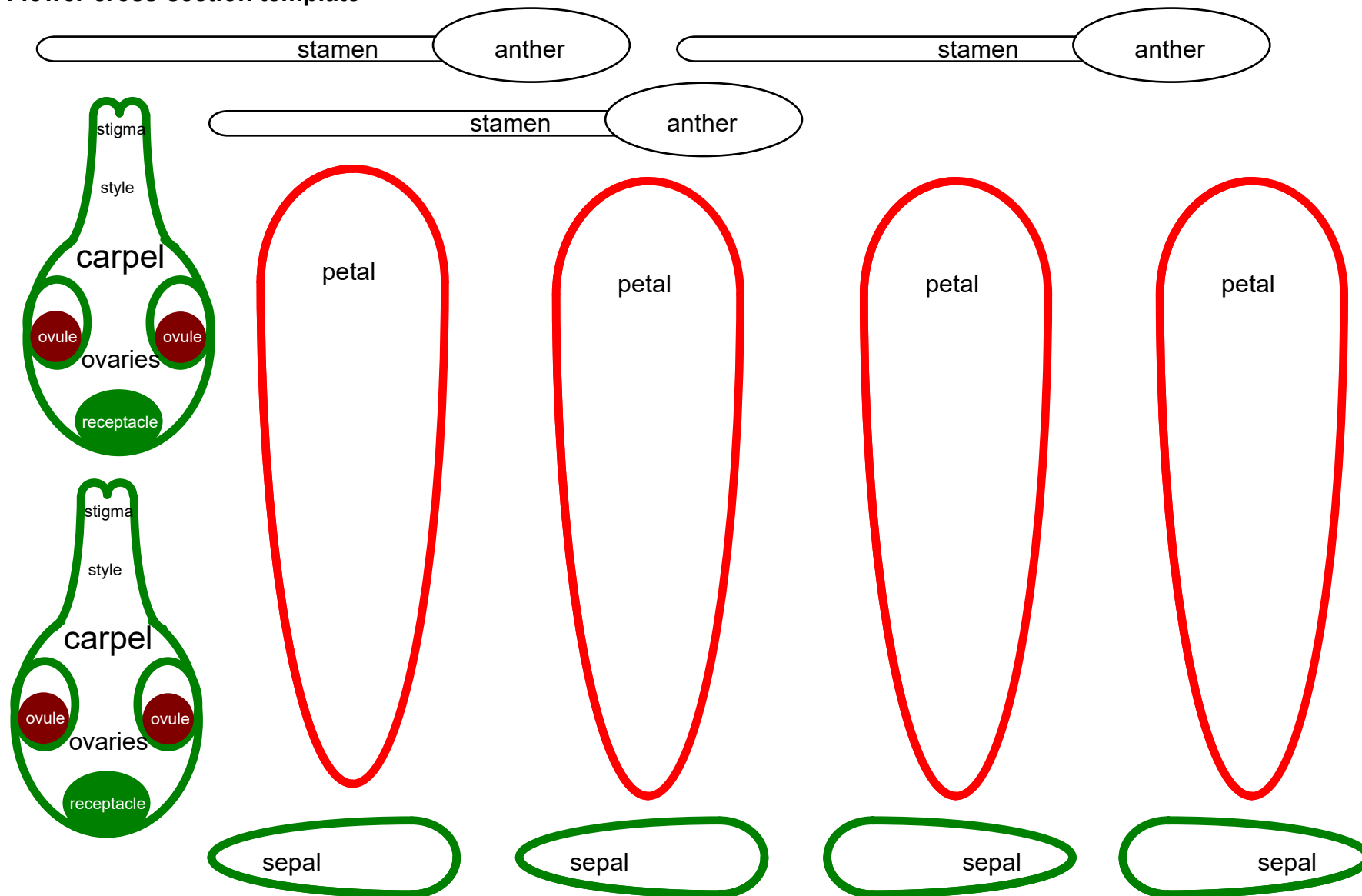
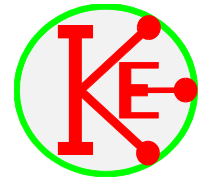


- 6). Add the other petals, gluing them to the rear of the carpel.
- 7). Colour the sepals green and cut them out. Put glue on the larger end of a sepal and stick onto the rear of the carpel so that the word sepal is visible. Repeat with a sepal on the other side. Glue the two remaining sepals at the rear of the carpel to hide all of the other glued sections.



- 8). Examine a selection of different flowers. Carefully dissect the flowers and try to identify the different parts. Remember that some flower heads contain multiple flowers, e.g. dandelion flower head.

Flower cross-section template



Flower cross-section template

